

DHFR Antibody
Rabbit mAb
Catalog # AP91383**Specification**

DHFR Antibody - Product Information

| | |
|---|------------------------|
| Application | WB, IHC, ICC |
| Primary Accession | P00374 |
| Reactivity | Rat |
| Clonality | Monoclonal |
| Other Names | |
| DHFR; DHFRP1; Dihydrofolate reductase; DYR; | |

| | |
|---------------|------------|
| Isotype | Rabbit IgG |
| Host | Rabbit |
| Calculated MW | 21453 Da |

DHFR Antibody - Additional Information

| | |
|------------------------------|---|
| Dilution | WB~~1:1000 IHC~~1:100~500 ICC~~N/A |
| Purification | Affinity-chromatography |
| Immunogen | A synthesized peptide derived from human DHFR |
| Description | Key enzyme in folate metabolism. Catalyzes an essential reaction for de novo glycine and purine synthesis, and for DNA precursor synthesis. |
| Storage Condition and Buffer | Rabbit IgG in phosphate buffered saline , pH 7.4, 150mM NaCl, 0.02% sodium azide and 50% glycerol. Store at +4°C short term. Store at -20°C long term. Avoid freeze / thaw cycle. |

DHFR Antibody - Protein Information**Name** DHFR**Function**

Key enzyme in folate metabolism. Contributes to the de novo mitochondrial thymidylate biosynthesis pathway. Catalyzes an essential reaction for de novo glycine and purine synthesis, and for DNA precursor synthesis. Binds its own mRNA and that of DHFR2.

Cellular Location

Mitochondrion {ECO:0000250|UniProtKB:P00375}. Cytoplasm {ECO:0000250|UniProtKB:P00375}

Tissue Location

Widely expressed in fetal and adult tissues, including throughout the fetal and adult brains and

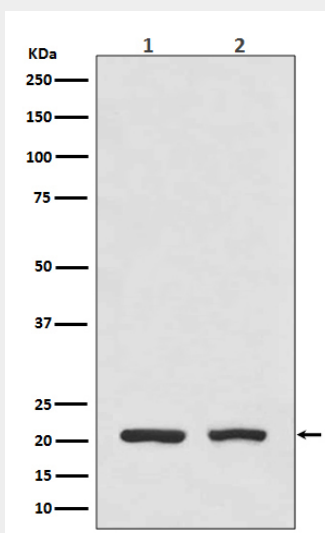
whole blood Expression is higher in the adult brain than in the fetal brain

DHFR Antibody - Protocols

Provided below are standard protocols that you may find useful for product applications.

- [Western Blot](#)
- [Blocking Peptides](#)
- [Dot Blot](#)
- [Immunohistochemistry](#)
- [Immunofluorescence](#)
- [Immunoprecipitation](#)
- [Flow Cytometry](#)
- [Cell Culture](#)

DHFR Antibody - Images



Western blot analysis of DHFR expression in (1) HeLa cell lysate; (2) Mouse spleen lysate.